



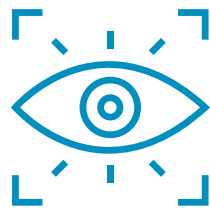
GROWING HOPE:
OUR MISSION IN ACTION

FY 24-25



ORGANIZATION OVERVIEW

Since 1998, One Place, has worked to strengthen children, connect families, and end child abuse in Onslow County through the provision of critical programs and services to local children and families.



VISION

All children and families are safe, healthy,
and living to their fullest potential.



MISSION

When they have challenges, we connect all children
and their families to programs and resources that
provide opportunities and hope.

REFLECTING ON OUR YEAR

Celebrating 25 Years of Visionary Leadership

This year, One Place proudly celebrated a remarkable milestone: CEO Dawn Rochelle's 25th anniversary at One Place. For a quarter of a century, Dawn has been an integral part of our mission, guiding the organization with unwavering dedication, bold vision, and a deep commitment to the well-being of children and families.

Her leadership has not only transformed One Place into a cornerstone of support and advocacy in our region, but has also created a ripple effect that continues to shape the future of our community. Through innovative programs, strategic partnerships, and a relentless pursuit of equity, Dawn has laid the groundwork for lasting change, ensuring that every child has the opportunity to grow up safe, supported, and empowered.

As we reflect on her legacy, we honor the countless lives touched by her work and look ahead with gratitude and excitement for the continued impact of her visionary leadership.



STATE OF CHILD CARE

Child Care Crisis in Onslow

County: Navigating the Fiscal Cliff

In 2024-2025, Onslow County faced a deepening child care crisis, mirroring challenges across North Carolina. For more than 25 years, One Place has connected families to resources and advocated for a stronger child care system.



End of ARPA Stabilization Grants

The American Rescue Plan Act (ARPA) stabilization grants, introduced in 2021, provided essential support to child care centers and educators, funding operations and staff retention. These grants ended for North Carolina on June 30, 2024, with a temporary extension at reduced funding through December. By March 2025, all ARPA stabilization grants had ceased, leaving programs facing a fiscal cliff. Nearly a third of North Carolina's child care centers were at risk of closing, with a net loss of 116 centers over the past year. Infant care cost 28% more than in-state tuition at a four-year public college.

Child Care Subsidy Waitlist

With ARPA funds expired, counties like Onslow implemented waitlists for the Subsidized Child Care Assistance Program. The NC Division of Child Development and Early Education (DCDEE) directed counties with high spending to prioritize families based on local policy. Many eligible children did not receive support, and families were left waiting. Centers reported serving fewer children with subsidies, impacting enrollment and forcing tuition increases. Without subsidies, parents struggled to afford care, and centers struggled to pay staff.

Onslow County: A Child Care Desert

Onslow County is considered a child care desert, with only one licensed slot for every five families. The county has North Carolina's highest birth rate and over 19,000 children under age five, yet only about 2,944 were enrolled in licensed care, and nearly 800 participated in the subsidy program. Staffing shortages led to closed classrooms and a 20% net loss in licensed programs since 2018. The crisis affected not just families, but also workforce and economic development, as lack of child care forced parents out of the workforce and impacted local businesses.

Statewide Leadership: Governor Stein's Task Force on Child Care

Recognizing the urgent need for solutions, Governor Josh Stein launched the North Carolina Task Force on Child Care and Early Education in March 2025. This bipartisan group was charged with identifying gaps and recommending strategies to expand access, affordability, and quality. The task force convened stakeholders, held expert roundtables, and released interim recommendations, including increasing subsidy rates, supporting the early childhood workforce, and fostering public-private partnerships. Final recommendations were due by year's end.

Community Response and Hope

Despite challenges, One Place and partners worked to drive solutions. Planning began for a local Child Care and Early Education Task Force to create local solutions. With funding, innovative programs like One Place Academy and the Community Early Childhood Apprenticeship Program that could build a pipeline for early educators, supporting recruitment, retention, and professional development. These efforts, along with new early childhood Career and College Promise programs at Coastal Carolina Community College, aimed to strengthen the workforce and expand access could transform the workforce gap.

Closing Reflection

One Place remains committed to advocating for children, families, and providers. The path forward requires bold investment, collaboration, and a shared vision for a future where every child has access to quality care.





REFLECTING ON OUR YEAR: BUILDING STRONG FOUNDATIONS

The earliest years of a child's life—roughly the first 2,000 days—are a powerful window of opportunity. At One Place, we champion this critical phase by offering critical resources and resilience-building programs that equip children with the tools they need to flourish. Our early education initiatives nurture healthy development and lay the groundwork for lifelong success.

We also serve as a trusted connector for families, guiding them to essential services—from identifying high-quality child care to supporting military families as they transition into life in Onslow County. Through our comprehensive support, families grow more confident, empowered, and deeply rooted in their community.

Child Care Resource & Referral

409 families received resources, information, or referrals to high-quality child care. **18%** of these families were military affiliated. Staff participated in **31** community outreach opportunities to share resources and information with families in the community. As the lead agency for the Safe Kids Onslow Coalition, One Place staff supported the program in providing **31** parents/caregivers with child passenger safety education, including information on appropriate car seat installation and usage.

One Place coordinates the quarterly Onslow County Child Care Consortium where leaders from various local organizations collaborate to enhance early child care programs in Onslow County and our neighboring military installations. These collaborative partnerships help elevate trends and the potential needs for child care- supply and demand, staff shortages, affordability, staff training, and more.

Resource and Referral staff share community resources based on the unique and evolving needs of families. These include child care options, parenting support, mental health services, housing assistance, and more. In Onslow County, we serve a wide range of individuals—including a significant number of military families—whose needs can shift rapidly due to deployments, relocations, or economic changes. As community challenges grow, we work diligently to stay informed about all available agencies and services.



“ Our team takes pride in serving as a trusted resource, meeting families where they are and equipping them with the tools and confidence they need to navigate their journey every step of the way.”

-R&E staff quote



Navy Respite

Our Child Care Resource & Referral team administers the Navy's Exceptional Family Member Respite Care program. EFMP Respite Care helps Navy families with children with special needs by providing up to 40 hours of respite care per month so they can leave the house, go to an appointment, or just rest, while knowing that their child is well cared for. Throughout the course of the fiscal year five providers served **15** families with **1,159.5** hours of respite care. Our team provided **17** site visits and compliance reviews.

Literacy Programs

One Place provides community-wide access to books through **93** Little Free Libraries throughout the community and **5** Story Walk at the Parks in an effort to increase literacy for children and families of all ages. One Place also hosts ongoing book drives to collect books to stock Little Free Libraries and support additional community needs for literacy materials.



Improving early childhood literacy with Dolly Parton's Imagination Library creates opportunities for children to thrive so that they succeed in school and help their communities grow and prosper. **14,964** children received books through the Imagination Library during the last fiscal year. **40,813** children have received books to build their home library since the program began in our community in 2011.

Since the relaunch of our Imagination Library account on March 1, 2025, we have received donations from staff, Marine Chevrolet, Kiwanis, Rotary, and other partners. Contributions have also come through The Dolly Difference campaign, with support from The Lazy Daisy, Rick's Restaurant, Topsail Brewery, and Koi.B Collective. Advancement featured DPIL in their Spring Campaign, and site-specific donations continue to be made. Notably, Topsail Brewery donated proceeds from the Dolly Sour, and The Lazy Daisy included the cost of a year's worth of books in their Winter Ball ticket price





In The News

Literacy Outreach

During Read Across America, we collaborated with YMCA, Onslow County Public Library, and Zing Zumm to organize a community-wide event featuring scheduled story times for infants, toddlers, pre-K, and school-age children. Each session included book readings and interactive movement activities.

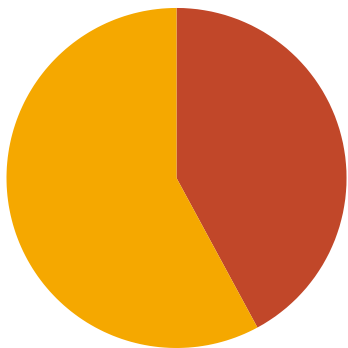
Attendees received new hardcover books at our Welcome Table, and healthy snacks were provided for every child. The event also offered resource tables, photo opportunities, and a portable Story Walk outdoors. Additional activities included bubble play, sidewalk chalk art, and a demonstration by Safe Kids on vehicle temperature safety.

Raising a Reader

Our Early Head Start program implemented the Raising a Reader program at **3** Child Care Partnership Program sites, impacting **83** children and their families.



PRESCHOOL PROGRAMS/EHS



Preschool Programs

Preschool programs served **837** children in Onslow County in **29** sites.

- 39%** of children served in NCPre-K had an IEP.
- 28%** of children served in Three School had an IEP.

This year, child care faced notable workforce challenges, including ongoing staff turnover and evolving education requirements. These factors have impacted their ability to meet the child care demand needs of our community.

9 families participating in Preschool Programs experienced homelessness, with **2** families in the Three School program and **7** families in NC PreK. Throughout the year, **7** children in Three School and **54** children in NC PreK disenrolled from their respective programs. The primary reasons for disenrollment included family relocations, children who never attended after enrollment, transfers to new locations, and transportation barriers.

Early Head Start

Funding for the EHS program is received through the U.S. Department of Health and Human Services, Administration for Children and Families, Office of Head Start. Financial data represents March 2024 - February 2025.

- **102** families were served in the most recent program year.
- Of those, **21%** were military affiliated.

children receiving services through Child Care Partnership: **85**

% of children with IFSP: **19%**

of returning children: **38**

% of children who "completed" the program: **38%**

of family engagement opportunities offered: **53**

Financials:

Non-Federal Share: \$497,205.00

Non-Federal Percentage: 20%

TOTAL FEDERAL BUDGET: \$2,486,154.00

Monitoring/Program Operations: \$1,988,949.00

Training & Technical Assistance \$39,450

TOTAL: \$2,028,399



TRAINING & TECHNICAL ASSISTANCE

Training

One Place held **127** training opportunities, reaching **550** early educators and community members, with topics including ACEs, health and safety, classroom management, playground safety, fire safety, and recognizing and reporting child abuse.

90% of participants reported gaining a skill they could immediately use. **8** early educators participated in professional development advising.

Technical Assistance

Families deserve to trust that the child care facility that they select for their children is high quality. The Technical Assistance (TA) Team at One Place supports the coaching, mentoring, and professional development of early educators (teachers and administrators) in our community. The team provides resources, increases knowledge, and supports the implementation process for improving early education environments for children and their families. **31** Child Care facilities, **80** classrooms, and **631** teaching staff received technical assistance services to help improve early education environments in Onslow County.

Celebrating Early Care & Education In The News:



Teacher Appreciation



Week of the Young Child



PROTECTING FUTURES: CHILD ABUSE PREVENTION & INTERVENTION

At One Place, every program we offer is rooted in the belief that protective factors—like strong relationships, emotional support, and access to resources—are essential to a child's well-being. When children experience abuse or neglect, our Child Advocacy Center becomes a beacon of hope, offering individualized care and a coordinated response that prioritizes healing and justice.

We know that nurturing environments in early childhood lead to powerful, long-term outcomes—not just for individual children, but for entire communities. Positive early experiences can reduce the incidence of child abuse, lower incarceration rates, decrease homelessness, and boost high school graduation rates.

That's why our early childhood programs focus on strengthening social and emotional development and promoting mental wellness. By investing in these foundational years, we're helping build a resilient future—one child, one family, one community at a time.

Child Advocacy Center

343 children were evaluated in the CAC. These children and their families were provided with referrals for victim support services such as support groups, mental health, parent education, health department programs, and preschool programs.

Of the children evaluated, **20%** were revictimized representing a decrease from **27%** in the previous fiscal year. Additionally **50%** of the children/families served were military-affiliated.

**TOTAL # IN EACH
AGE GROUP
PROVIDED SERVICES**

0y-5y	100
6y-12y	134
13y-17y	109



PRIMARY ABUSE TYPE

57% Child sexual abuse/assault	11% Witness to violence
23% Physical abuse	4% Neglect

Human Trafficking

Human trafficking is a problem in Onslow County. We have seen an increase in Human Trafficking over the past few years and determined that there has been a lack of education in identifying these types of cases and then being able to identify available resources. As a result we applied for and received a grant from the National Children's Alliance to hire a domestic violence and child sexual abuse materials coordinator. This position works toward equipping MDT partners and CAC staff with education and resources needed to better serve children who have experienced Commercial Sexual Exploitation of Children, including trafficking and child sexual abuse/exploitation material.

7 children seen for allegations of sex & labor trafficking in FY24-25

86% were female.
100% were in the 13-17 age range

**SINCE OPENING IN 2010 THE CAC HAS SERVED A TOTAL OF
4,188 CHILDREN AND THEIR FAMILIES.**

Everyone is amazing and I'm glad we have resources like this for victims and resources for the whole family

*-caregiver of a child
11-17*

I appreciate that they were so transparent about how the appointment would go and made the process so comfortable for my child and me.

*-caregiver of a 11-17 year old
child*

Mental Health Services

One Place continues to work toward increasing the community's capacity for mental health services for children and adults. Our providers offer Trauma Focused Cognitive Behavioral Therapy (TF-CBT), Alternatives for Families Cognitive Behavioral Therapy (AF-CBT), and Child Family Traumatic Stress Intervention (CFTSI), as therapeutic modalities. These types of therapy help children and their non-offending parents or caregivers overcome the trauma caused by the abuse of the child. Research has shown them to be effective in resolving a wide array of emotional and behavioral issues associated with the trauma of abuse or neglect. Access to specialized mental health services is critical for victims of child abuse and their families to move forward in the healing process. Providers work with both the child and non-offending caregiver(s) to address Adverse Childhood Experience (ACE) scores, learn how these scores impact their physical health, and share resources and tools to help the family reduce symptoms related to their ACE score. TF-CBT can reduce depression and anxiety symptoms and enhance coping skills which facilitates improved emotional well-being, self-esteem, relationships, and personal empowerment. Successful completion of TF-CBT shows an 80% reduction in Post Traumatic Stress Disorder symptoms.



[Learn About Our Mental Health Endowment](#)



Our team provided **227** in-house therapy sessions to **32** children, and **87** children were referred to mental health services at our community partners location.

“ Since coming to counseling my child is starting to want to do more things such as helping bake, crafts, going outside..
-caregiver of a child 6-10

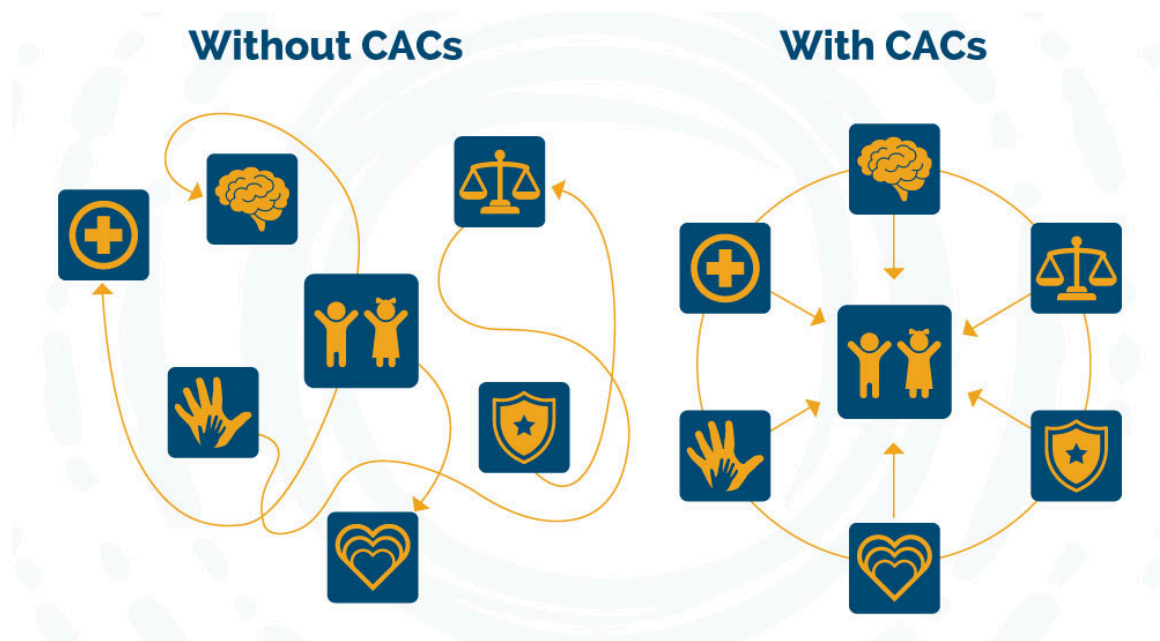
“ She seems to be becoming more of herself as time passes and she learns coping mechanisms."
-caregiver of a child 6-10

Multidisciplinary Team

At the heart of One Place Child Advocacy Center's mission to protect and serve victims of child abuse is a remarkable group of individuals—the Multidisciplinary Team (MDT). This team, mandated by law yet powered by a spirit of cooperation, embodies the very best of our community's commitment to children and families.

We are deeply grateful for the dedication of investigators, child advocates, and experts from every law-enforcement agency in Onslow County, as well as those from prosecution, mental health, child advocacy, medicine, child-protective services, and other vital disciplines. Their collaboration ensures that concerns of child abuse are met with swift, thoughtful responses, always prioritizing the well-being of the child and family.

Thanks to the MDT's partnership with our Child Advocacy Center, children are spared the trauma of repeatedly recounting their experiences, families are connected to essential services, and the path to safety and healing is made clearer. The impact of this teamwork is the foundation upon which hope and recovery are built.





VOICES OF RESILIENCE

COMMUNITY OUTREACH & EDUCATION

Community outreach and education are central to our mission of building a stronger, more resilient community. Through relationship building, communication efforts, and collaborative events, we connect caregivers, early educators, and community partners with the tools and knowledge they need to support children's development and well-being. This year, our outreach efforts expanded access to vital resources, fostered meaningful engagement, and strengthened the network of support across Onslow County—empowering individuals and our community to thrive together.



In The News

Community Services Day

In April we hosted Community Services Day—an event designed to bring together local organizations under one roof to strengthen awareness of available resources across Onslow County. Tailored for professionals in the human services field, the event features informative presentations and valuable

networking opportunities. We welcomed 37 community partners to share insights about their programs and services, all with the shared goal of enhancing support for children and families. These partnerships are vital to ensuring every family has access to the care and resources they need, and we deeply value the connections that make this collaborative effort possible.

Community Services Day

Was intentionally scheduled during Week of the Young Child, on Work Together Wednesday, to highlight the importance of community partnerships to ensure local children and families are connected to all the vital resources and support available in Onslow County.

During Community Services Day, the documentary Take Care, which examines North Carolina's child care crisis through the voices and stories of families, providers, teachers, and community leaders, offered a firsthand look at how this crisis affects everyone, how communities are working to address it, and what's at stake if we fail to find lasting solutions. Along with the documentary, a panel discussion with regional representatives closed out the day.

Panelists included:

Kim Gipson, Camp Lejeune – New River MCCS, Child and Youth Programs

Leanna Martin, NC Child – ECE Policy Analyst

Kathryn Wessell, Catalyst Child Care, Director and One Place Board Member

Katlyn Morin, Parent representative and Chair of the Early Head Start Policy Council

Liz Bell, EdNC Education Reporter

Samantha Cole, Child Care Business Liaison North Carolina Department of Commerce





INVESTING IN TOMORROW: ADVANCEMENT & INFRASTRUCTURE

At One Place, advancement is more than fundraising—it's about building meaningful relationships that sustain and grow our impact. Through strategic outreach, donor engagement, and community partnerships, we've expanded our network of support and deepened our connection to those who believe in our mission. This year's efforts reflect the power of collective generosity and the vital role it plays in helping children and families thrive.

This was another critical year for the advancement of our organization as we continued the public phase of the capital campaign to support our forever home, the SECU Hope Center. The trauma-informed space will serve as a holistic community hub to include learning space for the early care and education community and community partners, as well as therapeutic respite space for child abuse victims and their families.

We closed out the fiscal year at **75%** of our overall campaign fundraising goal. The facility is expected to open in 2026.



In September we hosted our 16th Annual Diamonds & Denim event to raise critical funds to support One Place programming and operational costs, raising \$120,018.98 (Gross).

Donor Growth

Every dollar counts—and the community's generous support and dedication to One Place's vision made a transformational impact on Onslow County. From supporting early literacy programs, like Dolly Parton's Imagination Library or Little Free Libraries, to providing life-changing services at the Child Advocacy Center we have a strong community of supporters investing in the mission and work of One Place to help build a more resilient future for Onslow County.



281 donors provided gifts to One Place to support our mission. This is a **36%** increase in donors from the previous fiscal year. Our donor retention rate continues to be above the industry standard at **49%**.

The unwavering support of our community partners, who champion our work through a variety of third-party events continues to inspire us. This year, several notable initiatives highlighted their commitment:

- The “One Place in Our Hearts” Valentine Gala, hosted by the Sneads Ferry Rotary Club, raised funds for the Child Mental Health Endowment.
- Coffee Connections and raffle events provided additional opportunities for engagement and fundraising.
- Sander's Ford Bronco Raffle brought the community together, with all proceeds benefiting One Place.
- Local Realtors generously donated a portion of their sales during the month of May.

These events not only generated vital resources for our programs but also reinforced the shared belief in our mission across the community. The collective efforts of our partners and supporters have been instrumental in advancing our work and expanding our impact.

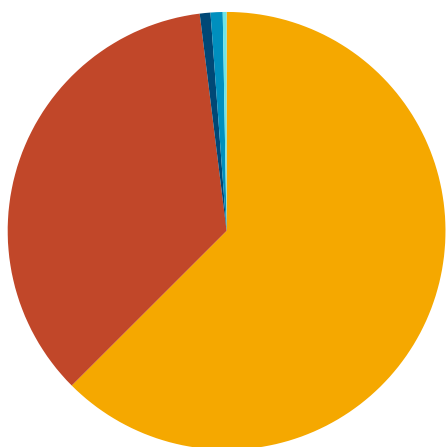


ACCOUNTABILITY & IMPACT

FINANCIALS

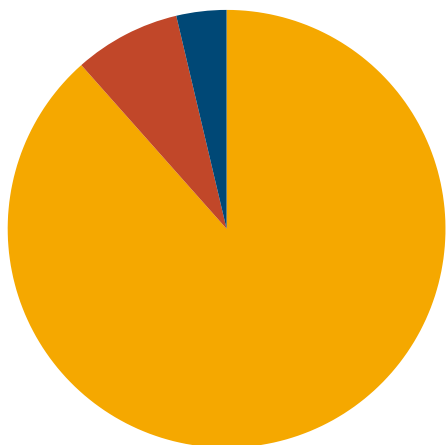
Our commitment to transparency, sustainability, and strategic growth guides every financial decision we make at One Place. Through responsible budgeting, careful resource management, and ongoing evaluation, we ensure that every dollar is used effectively to support our mission. This section highlights our financial performance and stewardship over the past year—demonstrating how sound fiscal practices help us deliver consistent, high-quality support to children and families across our community.

ONE PLACE FINANCIALS



RECEIPTS

- State Awards and Contracts \$7,862,096
- Federal Awards \$4,468,922
- Private Contributions \$99,214
- Special Fund Raising \$112,204
- Interest & Investment Earnings \$35,325



EXPENDITURES

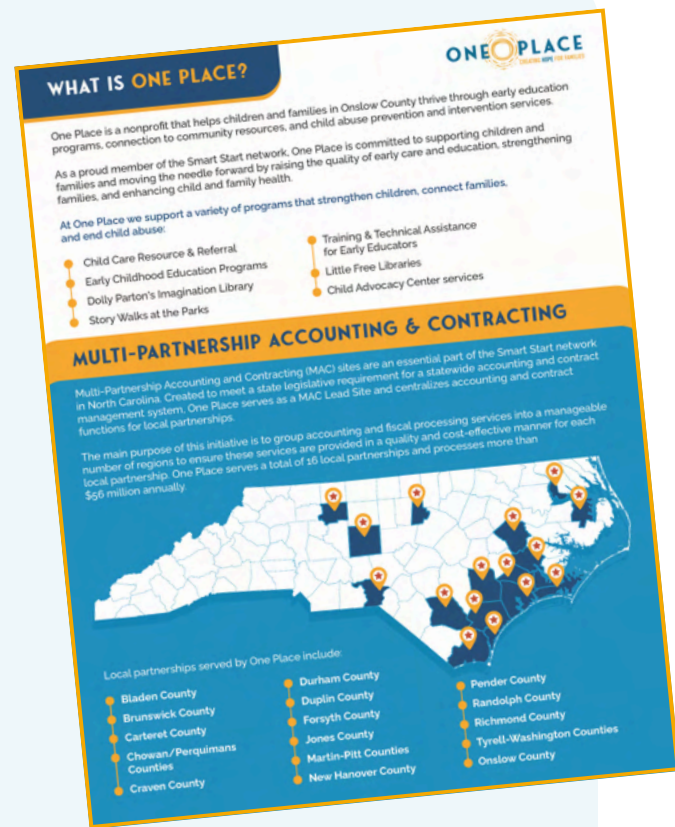
- Programs \$11,643,093
- Admin & Support \$1,034,306
- Other \$486,258

*6.54% of expenses were for admin

Multi-Partnership Accounting and Contracting (MAC)

MAC sites are an essential part of the Smart Start network in North Carolina. Created to meet a state legislative requirement for a statewide accounting and contract management system, One Place serves as a MAC Lead Site and centralizes accounting and contract functions for local partnerships.

The main purpose of this initiative is to group accounting and fiscal processing services into a manageable number of regions to ensure these services are provided in a quality and cost-effective manner for each local partnership. One Place serves a total of 16 local partnerships and processes more than \$56 million annually.



Local partnerships served by One Place include:

Bladen County

Brunswick County

Carteret County

Chowan/Perquimans
Counties

Richmond County

Craven County

Durham County

Duplin County

Forsyth County

Jones County

Tyrell-Washington Counties

Martin-Pitt Counties

New Hanover County

Onslow County

Pender County

Randolph County



OUR VILLAGE COMMUNITY OF SUPPORTERS

The heart of One Place beats stronger because of the generosity of our donors and supporters. Their commitment fuels our mission, expands our reach, and ensures that children and families across Onslow County have access to the care, early education, and resources they deserve. This section honors the individuals, businesses, and organizations whose contributions—whether financial, in-kind, or through volunteerism—have made a lasting impact. Together, we are building a brighter, more resilient future for our community.

CAPITAL CAMPAIGN DONOR LIST

State of North Carolina	Pete & Reginé Burgess	Henry & Dawn Rochelle
Marine Federal Credit Union	Deanna Trebil	SIA Group
State Employees Credit Union	Pete & Suzanne Cochran	Hidden Grounds Coffee
Mark & Kathryn Wessell	Deke Owens	Staci Davis
City of Jacksonville, NC	Providence Bank	James & Karen Nilan
Mary Cheatham King	Dr. Robert M. Sheegog	Stephen & Elizabeth
Anonymous	Raiford Trask	Beacham
Mary Hendrickson	D.R. Horton	James & Kathy Askins
Alexa Martin	Ray Family	Sylvester Family Foundation
Mat & Ann Marie Raymond	Dyon Foundation, Inc.	Jamie & Michelle Applequist
Alexis Pierson	Raymond Family (Sanders	Teresa Boykin
Martin Family Endowment	Ford)	Jane Johnson
Anonymous Trust	Efird Family (Modern	The Christi Hill Team
Michael Brown	Exterminating)	Jeb & Shawn Brown
Bingham & Sharon Hefner	Rep. Phil Shepard	Thomas W. Bell Jr., DDS &
Mike & Cori Grippo	Elizabeth Thomas	Elaine Bell
Brian & Natalie Kelly	Rev. Joel & Felicia Churchwell	John Starz Electric, Inc.
Michael Maynard	Faith Keller	Thomas & Kathleen Nilan
Cannon Foundation	Reva Sullivan	Julia Collins
Mike & Fay Yaniero	Filanthropie Consultancy	Truist Charitable Fund
Carley Haberl	Rick & Sherri Mayes	Kathleen Holbrook
Mil-Fed Trucking, Inc.	The Fox Family	Wes & Laurie Wilson
Castro Real Estate Group	RSHN, Inc.	Kathy Nurse
Military & Federal Construction	George & Rosie Jones	Lane Harris
Co., Inc.	Scott & Ashley Smith	Lil' Bean Cafe
Charles & James Sewell	George Dentel	MajGen Robert Dickerson,
Minges Bottling Co.	Senatra Spearmon	USMC (Ret) & Mrs. Karin
Christina Tompkins Wright	Grady White Boats	Dickerson
Neverland & Main Travel	Sewell Family (Golden Corral)	
Cory & Stacey Knox	Greg & Lynnette Lowrimore	
New River Rotary Club	SgtMaj Michael Johnson,	
Cross Ace Hardware	USMC (Ret) & Mrs. Jenn	
Patricia Lawrence	Johnson	
Daisy M. Haywood		

PROJECT TEAM

McKinley Building Corporation
Anchor Consulting
Old North Strategies
BB+M Architecture

One Place Board & Staff
Playbook Management
Filanthropic Consultancy
Summit Design

ANNUAL FUND DONOR LIST

A Beautiful Smile, Dr. Gina Mancini
Kathy Carter
Advancement Experts
Kellum Sod Farm, Inc.
Advantage Gold
Kiwanis Club of Onslow County
Alexis Pierson
Lakeshore Learning
Allied Securities of Jacksonville
LaWanna Wooden
Angry Ginger Irish Pub
Lejeune Motorsports
Atlantic Construction, Inc.
Marine Chevrolet
Autumn Bishop
Marine Federal Credit Union
Bank of America
May Exterminating Co. Inc.
Bill & Beverly Barr
Members of the Rotary Club for Safe
Childhoods
Bradley's Jewelers
Michael & Fay Yaniero
Brynn Marr Hospital

Michael Brown
C&S Paint Center
Mike R. Innovative Solutions
CarMax
Modern Exterminating
Century 21 Coastal Advantage
Moore Buick GMC Truck Inc
Charlie & Sara Parrish
National Dodge Chrysler Jeep Ram
Childcare Network
Neverland & Main Travel
Christina Malu
New River Rotary Club
Christina Tompkins
Nick & Cindy Chlomoudis
Coastal Enterprises of Jacksonville, Inc.
Nothing Bundt Cakes
Cory & Stacey Knox
Onslow Grading and Paving, Inc.
Daisy Haywood
Open Water Wellness
Dance Theatre of Jacksonville
Performance East, Inc.
Daniel & Melanie Nevels

ANNUAL FUND DONOR LIST

PNC Bank
Daniel Contreras
Providence Bank
David B Haire
Quadrant Construction, Inc.
Debbi Ray
Quality Equipment
Del Mar Center for Behavioral Health
Ray Properties, Inc.
Don Williamson Nissan
Realo Drugs
Donna Young
Rick & Sherri Mayes
Dora Compton
Rogers and Company CPAs PA
Douglas Worth McMillan
Sanders Ford, Inc.
Dr. Jan Overman
Sarah Cavaliere
E&J Electric, LLC
Sarah Merulli
East Carolina Gastroenterology
Scott A Playford M.D.
First Bank
SIA Group
First Citizens Bank
SNCO Spouses Club Camp Lejeune
First National Bank
Sneads Ferry Quality Childcare & Preschool
Fountain Management
Southern Touch Painting, Maintenance and Roofing
Frances Russell
Sport Durst Automotive Group
Gilliam & Gilliam , PLLC
ST Wooten
Grants Creek Nursery Inc
Steve & Stefanie Hunter
Hobby Chest
Stevenson Hendrick Honda
Hope for the Warriors
Susan Jensen
Hugh Lanier III & Amy Perry
Susan Stevenson
Jacob Donnenwirth
Teresa Boykin
Jane Ayers
The Christi Hill Real Estate Team
Jay & Molly McCabe
Thomas Swing
Jeaneal Pylant
Tina Fischlin
Jeb & Shawn Brown
Tina Glover State Farm
JFG Business Technologies
TNT Beach Bingo
John Starz Electric
Tony & Buffy Farmer
JoJo & Sara Cariaso
Utilitech, Inc
Jones-Onslow EMC
Verizon
Josh & Michelle Hamberg
Virginia LoGalbo
Julia Collins
Yellow Duck Marketing
Kara Darnell
Kasey Miller
Kathleen Holbrook

VOLUNTEERS

We extend our heartfelt gratitude to all volunteers who generously give their time and support to One Place.

Their dedication strengthens our community and enriches the lives of those we serve. Together, we make a positive impact every day.



Organizations like the Quilters Guild and Sewing Sisters provide quilts for the children evaluated in our Child Advocacy Center. These gifts allow each child to bring a quilt home with them once they have been served.

Other generous volunteers have also supported our mission by working community events, repairing and stocking Little Free Libraries, and handling administrative tasks for our programs.

BOARD(S) OF DIRECTORS

Governance & Programs

Julia Collins - Chair, Community Representative

Joel Churchwell - Vice Chair, Pastor, Sandy Run Missionary Church

Ashley Smith - Secretary, Department of Defense Schools

Elizabeth Thomas - Treasurer, Community Representative

Michael Brown - Community Representative, Bank of America

Brian Kelly - Community Representative, City of Jacksonville

Senatra Spearmon - Community Representative, Onslow County Public Library

Kathryn Wessell - Community Representative, Catalyst Child Care Center

Mary Hendrickson - Community Representative, Retired DOD Educator

Daisy Haywood - Community Representative, Retired Law Enforcement

Staci Davis - Community Representative, YMCA

Monroe "Roe" Holcomb - Community Representative, The Steven A. Cohen Military

Family Clinic @ Hope for the Warriors

Emily Sabo - Early Head Start Program/Parent Representative

Organizational Advancement

Mike Yaniero - Chair, Director of Public Safety, City of Jacksonville

Julia Collins - Vice Chair, Community Representative

Joel Churchwell - Treasurer, Pastor, Sandy Run Missionary Church

Jennifer Kellum - Secretary, Small Business Owner

Zac Everhart - Community Representative

Bob Dickerson - Community Representative, MajGen USMC Retired 17

Jeb Brown - Community Representative, Small Business Owner





LOOKING AHEAD: VISION FOR THE FUTURE

As we step into the next fiscal year, One Place is poised for transformative growth. A major milestone awaits with our move into our forever home—The SECU Hope Center—a space designed to foster healing, connection, and innovation. This new facility will allow us to reach even more children and families with the critical programs and services they need to thrive.

We are also expanding our Child Advocacy Center to reduce wait times and ensure timely, trauma-informed care for victims of child abuse and neglect. By strengthening our infrastructure and deepening our impact, we aim to broaden our reach across Onslow County and beyond—creating a more sustainable future for the organization and the communities we serve.

With every step forward, we remain committed to building a resilient, compassionate network of support where every child and family has the opportunity to succeed.



GET INVOLVED

Make a difference today! Help us strengthen children, connect families, and end child abuse.

Advocate

- Follow us and share our posts on Facebook, Instagram and LinkedIn
- Coordinate a book drive to fill Little Free Libraries throughout the county.
- Read and share our blog: www.oneplaceonslow.org/our-blog/

Host

- Hold a meeting or host an event on behalf of One Place.
- Contact Jennifer Johnson at 910.330.0439 or jennifer.johnson@oneplaceonslow.org

Give

- Invest in the future of Onslow County. Make a one-time or recurring donation at www.oneplaceonslow.org or by calling 910-353-1103